

SHARP®

DESKTOP COLOR DOCUMENT SYSTEMS



MX-C250 MX-C300W

On a desktop or cabinet, the compact design of the new MX-C250 and MX-C300W make them ideal for any size office or workgroup.

THE TOOLS YOU NEED TO GAIN THE COMPETITIVE ADVANTAGE



The MX-C250 and MX-C300W desktop color document systems are designed to be compact and powerful, bringing performance and productivity to individuals and small workgroups. These models are capable of output speeds of up to 30 pages per minute (PPM), regardless of whether you're working with monochrome or color documents.

- Offering print, copy, scan and fax features, these business-quality multifunction document systems enhance day-to-day workflows.
- The compact size of the MX-C250 and MX-C300W enable them to fit into tight workspaces without sacrificing the advanced technology that provides professional quality output.
- Standard wireless networking on the MX-C300W allows users to connect to the multifunction device without having to be near a wired network connection.
- Sharpdesk Mobile compatibility offers cutting edge mobile scanning and printing that connects the MX-C250/C300W to mobile products such as iPad®, iPhone®, Android™, Windows® 8, or Windows® RT devices.

The compact design of the MX-C250/C300W series was achieved using breakthrough technologies developed internally by Sharp, which include a high performance lens, downsized scanning unit, side-by-side toner cartridges and a reduction in overall parts. These technologies have helped Sharp offer one of the lowest costs-per-copy (CPC) in this category!

compact

VERSATILE FUNCTIONS RIGHT AT YOUR FINGERTIPS



SOPHISTICATED
COMPACT DESIGN

PROFESSIONAL
OUTPUT QUALITY

VALUE-ADDED
LOW COST-PER-COPY

CONVENIENT WIRELESS
CONNECTIVITY

Features that keep you ready for business.

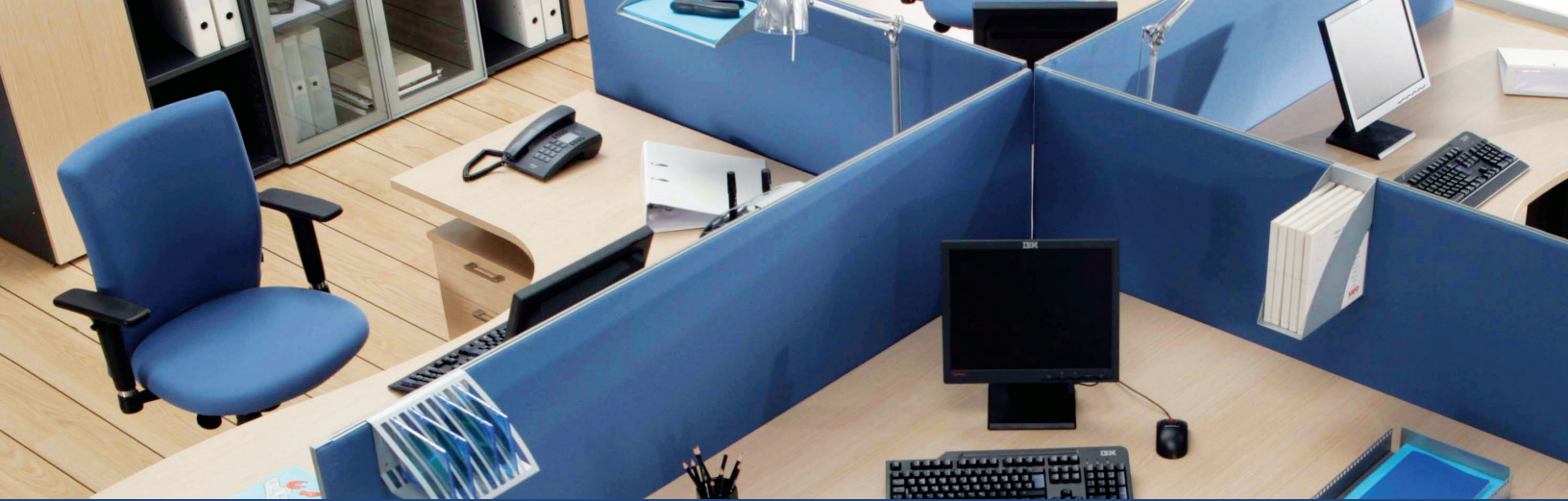
- 50-page Reversing Single Pass Document Feeder (MX-C300W), 35-page Single Pass Document Feeder (MX-C250)
- Standard auto **duplex printing**
- Paper Capacity: standard 250 sheet tray and 50-sheet bypass, expandable to 800 sheets total with **optional 500-sheet high capacity cassette**
- Productive Printing and Copying: **25 PPM/CPM** (MX-C250) and **30 PPM/CPM** (MX-C300W)
- Standard PCL®6 and PostScript® 3™ printing systems for both **PC and Mac printing** environments
- High Quality **600 x 600 dpi** copy and print
- Simplified user interface utilizing a **5-line LCD operation panel**
- Full Color Scanning to E-mail, **FTP server, network folder**, USB memory or desktop
- **Compact Design:** does not require a special cabinet and easily fits into today's small office environments



MX-C300W control panel.



- Sharpdesk Mobile offers **powerful mobile scanning and printing** for users' mobile products including iPad, iPhone, Android, Windows 8 and Window RT devices
- Front USB port for **easy scan to USB** memory or printing from USB
- ID card shot feature for easy **copying of insurance cards**, credit cards or drivers license
- IPv6 support ensures the latest **compatibility with network environments**
- Inbound fax routing to network folder saves printing costs and guards **privacy of incoming data (MX-C300W)**
- **Sharp Remote Device Manager** compatible for easy management of all your Sharp MFP products



POWERFUL MFP FEATURES IN A SMALL FOOTPRINT



Compact yet powerful enough for workgroup environments.



Convenient access to paper path from side panel door makes it easy to clear misfeeds.

Designed for Workgroups or Individual Offices

Low Cost of Ownership

From the ground up, Sharp designed these compact desktop color document systems to keep your everyday costs low starting with a unique dual component developer system that offers **one of the lowest costs-per-copy** in the category. Sharp understands that the initial cost of office equipment is only part of the equation you consider when making an important buying decision. Be sure to ask a Sharp representative to analyze your office usage and let them show you savings specific to your office!

Easy-to-Use Control Panel

The MX-C250/C300W use a 5-line LCD panel and **ergonomic keypad for quick entry** of copying, scanning or faxing requirements. The customizable program keys allow users to save the frequently used settings/destinations. For example, if you often scan to a network folder in a PDF format at 200 dpi, this can all be accomplished with the touch of one button.

Compact Design

These MX models offer a small footprint that is perfect **for tight work environments** or individual office desktops. With a compact size of 17"(w) x 20"(d) x 15 3/4"(h), finding a location for a new full-function device has never been easier.

Sharp Developments

The sophisticated features, **low cost-per-copy** and size of the MX-C250/C300W are only possible with a 100% new clean sheet design by Sharp engineers. This series offers a compact scanner with custom lenses that don't sacrifice resolution, side-by-side toner cartridges for easy changing, and a reduction in the overall number of parts compared with previous generation Sharp models.



MX-C300W shown with optional 500-sheet paper tray (left) and standard configuration (right).



VERSATILE BUSINESS TECHNOLOGIES



Sharp's integrated network scanning offers one-touch document distribution to multiple destinations (Fax on MX-C300W only).



An easily accessible USB connector on the front of the MFP allows simplified access to common USB thumb drives.



Micro-fine Toner Technology helps provide optimum color balance and density as well as enhanced edge definition.

Jump-start your productivity with advanced technologies at your fingertips.

Standard SPF/RSPF

The MX-C250 comes equipped with a standard 35-sheet Single Pass Document Feeder and the MX-C300W comes equipped with a standard **50-sheet Reversing Single Pass Document Feeder**. Each feeder allows for 9 pages-per-minute color and 18 pages-per-minute black & white scanning so processing important documents is quick and easy. In combination with the built-in stackless duplex module, these feeders allow users to easily print on both sides of the paper.

Wireless Connectivity

With the standard wireless connectivity on the MX-C300W, users can **easily scan or print from up to 5 wireless devices simultaneously** such as a PC, laptop, smartphone, or tablet. Using Sharpdesk Mobile or standard wireless communication protocols users can easily communicate with the MX-C300W without the hassle of a wired connection. Users no longer have to transfer files or images to a local machine prior to printing. Additionally, wireless connectivity enables the MFP to be placed in locations that may not have a wired network outlet.

Advanced Color Scanning

MX-C250/C300W scanning provides a multitude of functional ways to distribute scanned documents to your business partners. Scanning options include:

- Scan to E-mail sends documents as an E-mail attachment
- Scan to FTP Server scans documents directly to an FTP server for storage
- Scan to Network Folder (SMB) sends files to a shared folder on a networked Windows PC
- Scan to Desktop sends scanned documents directly to your PC desktop via Sharpdesk
- Scan to USB Memory scans documents directly to USB memory devices

Out-of-box Network Printing

Standard **PCL® 6** and **PostScript® 3™** compatible printing offer enhanced productivity for busy offices and workgroups. The MX-C250/C300W provide high quality rendering of both PC and Mac files without adding additional cost. PostScript output makes the MX-C250/C300W an excellent choice for photo or PDF proof printing.

Sharp Micro-fine Toner Technology

The MX-C250/C300W utilize the latest micro-fine toner technology, enabling faithful reproduction of graphics and documents with fine detail. The MX-C250/C300W use a dual-component developing system while still being one of the smallest and lightest in its class, even compared with competitive mono-component system models. And the Sharp dual-component developing system can **reproduce clearer dot images and smoother lines** than typical mono-component systems. In addition, the granularity produced by a dual-component developing system is superior to that by a mono-component system.

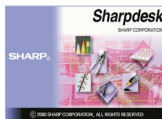
SHARPEDESK AND SHARPEDESK MOBILE



Streamline your document workflow and enhance productivity.

SHARPEDESK

Sharpdesk software is an easy-to-use personal document management application that lets users browse, edit, search, compose, process and forward scanned and native electronic documents.



Manage Document Workflow

Sharpdesk simplifies the creation and distribution of proposals, reports and more. Simply drag and drop your files onto Sharpdesk software's work area and you'll be able to browse through them in a single window. Each file type can be displayed as a thumbnail for quick visual location and identification of a document. Over 200 types of files, such as Excel, Word, PowerPoint, TIFF, JPEG and BMP, are supported.

Sharpdesk Desktop Key Benefits:

- Save time and steps, by providing easy to use scanning directly to your desktop
- Search results with thumbnail, filename and keyword for fast and easy recognition
- Combine, split and rotate image files for printing
- Compressing files saves memory space and provides faster network communication

SHARPEDESK MOBILE

Sharpdesk Mobile is a powerful, cutting edge mobile scanning and printing app that connects Sharp MFPs via wireless to mobile products such as iPad, iPhone, Android, Windows 8 and Windows RT devices.

Hassle-free Printing

Connect to a Wi-Fi network, select a document, preview and print directly to a supported Sharp MFP from a smartphone or tablet.

Simplified Scanning

Scan hard-copy documents to PDF for **easy access** by simply scanning from a Sharp MFP to your device. Your smartphone or tablet profile can be stored as a "scan-to" location on the MFP for **one-touch operation**.

Seamless Collaboration with Other Applications

Sharpdesk Mobile allows seamless file sharing with other applications. Users can attach scanned files to E-mail, share documents with other applications or print files from other apps.

Sharpdesk Mobile:

- Receive, preview and store scanned images
- Print data from mobile devices
- Send data on mobile devices as an attachment of E-mail
- Share data on mobile devices with other applications



SHARP REMOTE DEVICE MANAGER

Enhance efficiency and maximize your time through Sharp's versatile device management.

Management Software

Sharp Remote Device Manager is a device management software, developed by Sharp, which allows the operator to **browse and operate an MFP via a web browser**. This advanced access **allows** for easy setup and configuration of the MFP, enabling users to get the most of the advanced features the MX-C250/C300W have to offer!

Superior Features

- Graphical device management screen by list/icon display
- Status indicators of toner and paper tray
- Notification of MFP status by E-mail alert
- Easy access to MFP features via embedded Web page
- Device discovery based on a specific IP address, an IP search range on a designated subnet



Sharp Remote Device Manager





SECURITY THAT HELPS PROTECT YOUR BUSINESS

To help protect your data, the MX-C250/C300W offer several layers of standard security, making Sharp the optimum choice to help protect employees' privacy and intellectual property. As a leader in office equipment security, Sharp makes it easy for virtually any business or government entity to safely deploy digital copying, printing, scanning and faxing.

User Authentication

To limit access to authorized users, the MX-C250/C300W support user authentication for up to 30 users.

Control Device Access over the Network

To help restrict access to the device over the network, the MX-C250/C300W offer IPsec, SMB and IP/MAC address filtering.

Documents Remain Confidential

The MX-C250/C300W offer confidential printing that when used, requires users to enter a PIN code in order to print a queued document.

Fax Filtering/Blocking

To aid in reducing unwanted incoming faxes, the MX-C300W fax filtering and blocking function rejects faxes from designated numbers/senders; easily preventing junk faxes and wasting supplies.

Port Controls

To ensure proper configuration and enhance network security, the MX-C250/C300W support the enabling and disabling of selected network ports, and/or the changing of port numbers. In addition, network filter settings allow the MX-C250/C300W to be configured to allow network access from only authorized PCs and/or servers.

ENVIRONMENTAL COMMITMENT



An Environmentally Responsible Approach to Product Design

The MX-C250/C300W utilize Sharp's advanced micro-fine toner technology, which offers a lower consumption rate and produces less waste than conventional toners, resulting in longer replacement intervals. Sharp supplies are packaged using fully recyclable materials. Long-life consumable parts help minimize service intervals and downtime, resulting in lower operating costs. With two different energy saving modes, power can be reduced or shut off at set intervals. The MX-C250/C300W document systems are ENERGY STAR® qualified and RoHS compliant to help meet the latest green initiatives.

Toner Recycling Program

As part of our commitment to helping preserve the environment, Sharp offers our customers zero-waste-to-landfill recycling for all Sharp consumables, including cartridges, bottles, toner collection containers and drum units. Sharp encourages customers to recycle their used Sharp toner cartridges in bulk by providing a pre-paid Recycling Kit for their return to our facility.

Environmental Leadership

As a testament to our commitment to the environment, Sharp is a multi-year winner of the ENERGY STAR annual Excellence in Energy Proficiency Product Design. Sharp is also a multi-year winner of the SmartWay® Excellence Award, which recognizes companies for conserving energy and lowering greenhouse gas emissions in logistics and transportation. Sharp was also a previous recipient of the Excellence in Partnership Green Contractor Award and the Evergreen Award from the General Services Administration (GSA) and the Coalition for Government Procurement. These awards recognize environmentally responsible businesses and their efforts on recycling, waste reduction and affirmative procurement practices.

Global Initiatives

Sharp is committed to environmental sustainability and corporate responsibility including planning, design, manufacturing, distribution and product end-of-life management. For more information about Sharp's environmental leadership including information about energy efficient products, electronics or toner cartridge recycling, please visit www.sharpusa.com/environment.

MX-C250/C300W SPECIFICATIONS

Main Specifications

MX-C250/ MX-C300W	Base models include multitasking controller, 50-sheet RSPF (MX-C300W)/35-sheet SPF (MX-C250), PCL®6 and PostScript® 3™ compatible printing systems, network scanning, auto duplexing, 1 x 250-sheet paper drawers, 50-sheet bypass tray. Black and color toner and developer is included.				
Type	Color multi-function digital document system				
Display	5 Line dot matrix high-resolution display with backlight (white LED).				
Functions	Copy, print, network print, network scan, scan to e-mail and fax (MX-C300W only)				
Copy System	Dry electrostatic transfer/Dual component developer/Magnetic brush development/OPC drums/Belt type fusing/white LED exposure				
Originals	Sheets and bound documents				
Max Original Size	8.5" x 14"				
Copy Size Min.	5½" x 8½"				
Copy Speed	Copy/Print Speed 25/25 ppm (MX-C250), 30/30 ppm (MX-C300W) B&W/Color (8½" x 11")				
Multiple Copy	Max. 999 copies				
First Copy Time (in Seconds)		MX-C250		MX-C300W	
		B&W	Color	B&W	Color
	Platen Glass	10	18	10	18
	Doc. Feeder	14	22	16	25
Warm Up Time	29 seconds or less				
Magnification	25% to 400% in 1% increments (with document feeder 25%-200%)				
Original Feed	MX-C300W 50-sheet RSPF/MX-C250: 35-sheet SPF with original size detection.				
Scan Speed	SPF Copy/Scan: Up to 19 IPM simplex RSPF Copy: Up to 19 IPM simplex (B&W) (Color) RSPF Scan: Up to 9.5 IPM duplex (B&W/Color) Original Sizes 5½" x 8½", 8½" x 11", 8½" x 14"				
Paper Capacity	Standard: 300 Sheets/Maximum: 800 Sheets				
Paper Feed System	Standard: (1) 250-sheet paper drawer (letter/statement size) and 50-sheet bypass tray (letter/statement). Optional: 500-sheet letter/statement size.				
Paper Weights and Types	Paper drawers: 16 lb. bond to 28 lb. cover. Other paper types include and types plain, pre-printed, recycled, pre-punched, letterhead and color paper. Bypass tray: 16-28 lb. bond (plain paper), 13-16 lb. bond (thin paper), 28 lb. bond to 80 lb. cover (heavy paper), 20-24 lb. bond (Monarch/Com-10 envelope). Also label paper, gloss paper, pre-printed, recycled, pre-punched, letterhead and color paper.				
Duplexing	Standard automatic duplex copying and printing (MX-C300W), manual copy duplex, Standard duplex printing (MX-C250)				
CPU	Up to 600 MHz multi-processor design				
Interface	RJ-45 Ethernet (10Base-T, 100Base-TX), USB 2.0 (1 host ports, front), USB 2.0 (1 device port, rear)				
Memory	Standard 512MB copy/print (shared)				
Hard Disk Drive	N/A				
Color Modes	Full Color Mode, Monochrome (B/W)				

Copy Resolution	Scan: B&W/color: 600 x 600 dpi; Copy Output: B&W/color: 600 x 600 dpi. Default resolution is 600 x 400 dpi when using document glass; 600 x 300 dpi when using RSPF/SPF.
Exposure Control	Modes: Text, Text/Printed-Photo, Photo
Halftone	256 gradations/5 levels (monochrome)
Copy Features	Scan-Once Print-Many, electronic sorting, Auto Tray Switching (ATS), ID Card Copy, Card Shot, Sharpness, 2-in-1 / 4-in-1 multi shot
Account Control	Up to 30 users. Supports user-number authentication
Output Tray	Main output tray (top): 150 sheets (face down)
Firmware Management	Flash ROM with local (USB)
Device Setup	Web-based management/cloning with user/administrator level login
Service/Functions	Remote access to service logs and click counts
Accessibility	Section 508, concave key, operation position, BEEP sound on standard values, adjustment of key touch speed, adjustment of key touch sound, Platen cover/free stop of document feeder, key repeat prohibited, screen timeout prohibited, program
Environmental Standards	International Energy Star Program Ver. 1.2, Canadian EcoLogo Program (CCD-035), Blue Angel (RAL-UZ171), European RoHS
Power	AC 100-127 VAC, 50/60 HZ, Amps 9
Power Consumption	1.1kW
Weight	MX-C250: 61.73 lbs./MX-300W: 63.93 lbs.
Dimensions Approx.	MX-C250: 17" (w) x 20" (d) x 15 3/4" (h) MX-C300W: 17" (w) x 20" (d) x 16 3/4" (h)

Network Printing System

PDL	Standard PCL® 6, PostScript® 3™ compatible
Resolution	600 x 600 dpi
Print Speed	25 ppm (MX-C250), 30 ppm (MX-C300W) B&W/Color (8½" x 11")
Print Drivers	Windows XP, Windows XP x64, Windows Server® 2003, Windows Server® 2003 x64, Windows Server® 2008, Windows Server 2008 x64, Windows Vista®, Windows Vista x64, Windows 7, Windows 7 x64, Windows 8, Windows 8 x64, Windows Server 2012 x64, MAC OSX® (including 10.4 to 10.8)
Features	Windows cluster print, ROPM, duplex printing, color adjustment settings, driver delivery functions, toner save mode, electronic sorting, N-up printing, watermarks, image rotation, job retention.
Direct Printing File Types	TIFF, JPEG, PCL, PRN, TXT, PDF, Encrypted PDF, PostScript
Methods	FTP, USB memory
Resident Fonts	80 outline fonts (PCL), 136 fonts (PS)
Interface	RJ-45 Ethernet 10/100 Base-T, USB 2.0
Operating Systems	Windows Server 2003, Windows Server 2008, Windows XP, Windows Vista, Windows Systems 7, Windows 8, Mac OS X10.4, X10.5, X10.6, X10.7, X10.8
Printing Protocols	LPR, IPP, Raw TCP (port 9100) and FTP

Network Protocols	TCP/IP (IPv4, IPv6, IPSEC) SSL (HTTP), SMTP, LDAP, LPD and LPR for Unix.
Network Security	IP/MAC address filtering, protocol filtering, port management and user authentication

Network Scanning System

Scan Modes	Color, monochrome, grayscale
Standard	
Max Original	8.5" x 14"
Optical Resolution	600 dpi
Output Modes	600 dpi, 400 dpi, 300 dpi, 200 dpi, 150 dpi, 100 dpi
Image Formats	Monochrome: TIFF, PDF Color/Grayscale: Color TIFF, JPEG, PDF
Image	Monochrome Scanning: Uncompressed, G3 (MH), G4
Compression	(MR/MMR) Color/Grayscale: JPEG (high, middle, low)
Scan Destinations	E-mail, Desktop, FTP, Network Folder (SMB), USB Memory
Group Destinations	Up to 300
Max. Jobs	Up to 100
Network Protocols	TCP/IP (includes SMTP, LDAP, FTP) and SMB
Software	Sharpdesk® desktop personal document management software (1 user license included), Sharpdesk Mobile (download)

Super G3 Fax (MX-C300W only)

Transmission	Super G3, G3
Mode	
Modem Speed	33.6 KBPS
Compression	MMR, MR, MH
Methods	
Scanning Method	Sheet fed simplex or duplex or book
Max. Resolution	400 dpi
Transmit Speed	Approx. 2 seconds with Super G3/JBIG4
Auto Dialing	Up to 300
Group Dial	Up to 100
Inbound	SMB
Fax Routing	
Programs	9
Memory	8MB
Halftone	256 levels

Optional Equipment

MX-CS11	500-Sheet Paper Drawer
Supplies	
MX-C30NTB	Black Toner Cartridge
MX-C30NTC	Cyan Toner Cartridge
MX-C30NTM	Magenta Toner Cartridge
MX-C30NTY	Yellow Toner Cartridge
MX-C30NVB	Black Developer
MX-C30NVC	Cyan Developer
MX-C30NVM	Magenta Developer
MX-C30NVY	Yellow Developer
MX-C30DR	Drum
MX-C30HB	Toner Collection Container



SHARP®

SHARP ELECTRONICS CORPORATION
100 Paragon Drive, Montvale, NJ 07645
1-800-BE-SHARP • www.sharpsusa.com

Design and specifications subject to change without notice. Sharp, Sharpdesk, My Sharp, and all related trademarks are trademarks or registered trademarks of Sharp Corporation and/or its affiliated companies. Windows, Windows Server and Windows Vista are trademarks or registered trademarks of Microsoft Corporation. All other trademarks are the property of their respective owners. iPhone and iPad are registered trademarks of Apple Inc. Android is a trademark of Google Inc.

